

End Cap Installation

Step 1: Front Cap Installation

(See Figure 1)

Procedure: Center the front cap on the front wall of the box with the lower 1 inch flange (A) positioned flush against the outside front edge of the box. Using a 3/16" drill bit, drill 14 holes through the 1 inch flange and into the box wall (B) placing 2 holes at approximately every 15 inches (see Figure 1). Secure the front hood using the 1/4" x 1 inch lag screws provided. Drill through the horizontal portion on each side of the front cap and secure using 1/4 x 1 inch lag screws (C).

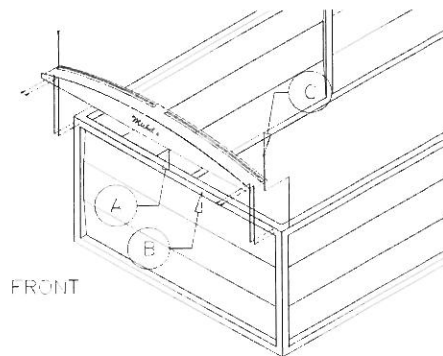


Figure 1

Step 2: Rear Cap Installation

(See Figure 2)

Procedure: Temporarily place the rear cap on the rear ledge of the box with its depending flange (D) inside the box. Place two bent angles (E) into the tubular supports (F), which are welded to the underside of the rear cap. Slide the hoop holder bracket (G) vertically until it is positioned just below the bend in the bent angle (E). Mark hoop holder holes on the inside box wall and secure the hoop holder to the box wall using the 1/4 inch x 1 inch lag screws provided. Apply firm downward force on the ends of the rear cap and clamp the cap down on both sides. Drill a 1/4 inch transverse hole through the bottom area of the bent angle (E). Be sure to drill the hole as close to the bottom of the hoop holder as possible to prevent the rear cap from moving. Insert the hitch pin (H). Weld the bent angle to the tube (F) on steel caps only. Drill a 1/4 inch hole through the tube (F) and the bent angle (E). Secure using the roll pine (I) provided.

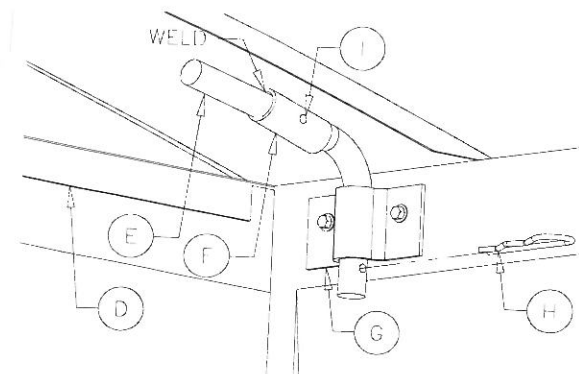


Figure 2