

# ***Inland Plastics Limited***



## ***Lower Crank Tarp Kit Installation Manual***

INLAND PLASTICS INC  
Lower Crank Tarp Kit  
PACKING LIST / PARTS LIST

**PART                      Quantity    QC Check**

**Big Parts Bag**

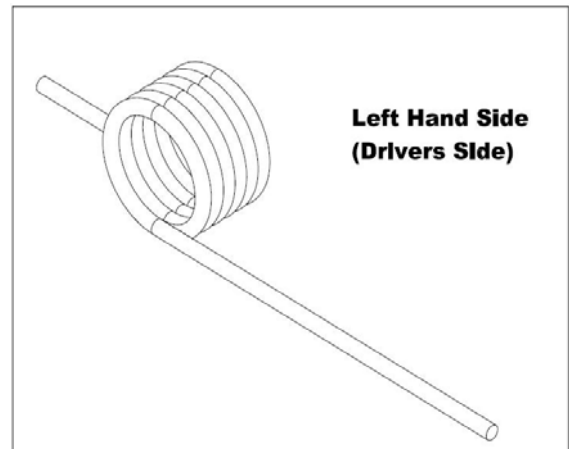
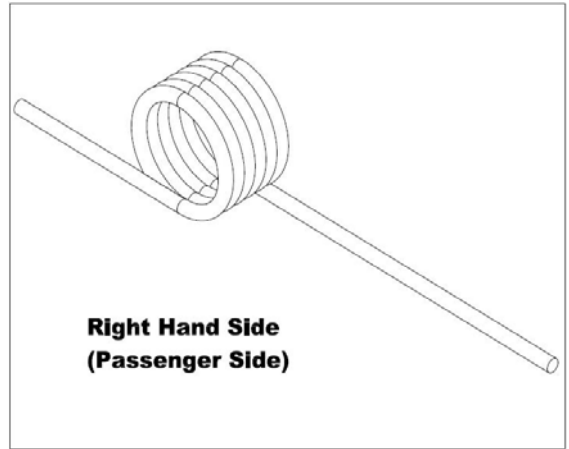
5/16" Self Thread Bolt	20	
3/8" X 2.5" Bolt	4	
3/8" Lock Nut	4	
"U"Clamps	4	
"U" Clamp Screw	4	
1 1/8" ID Washer	2	
2" X 1/8" Cotter Pins	2	
Instructions	1	

**Small Parts Bag**

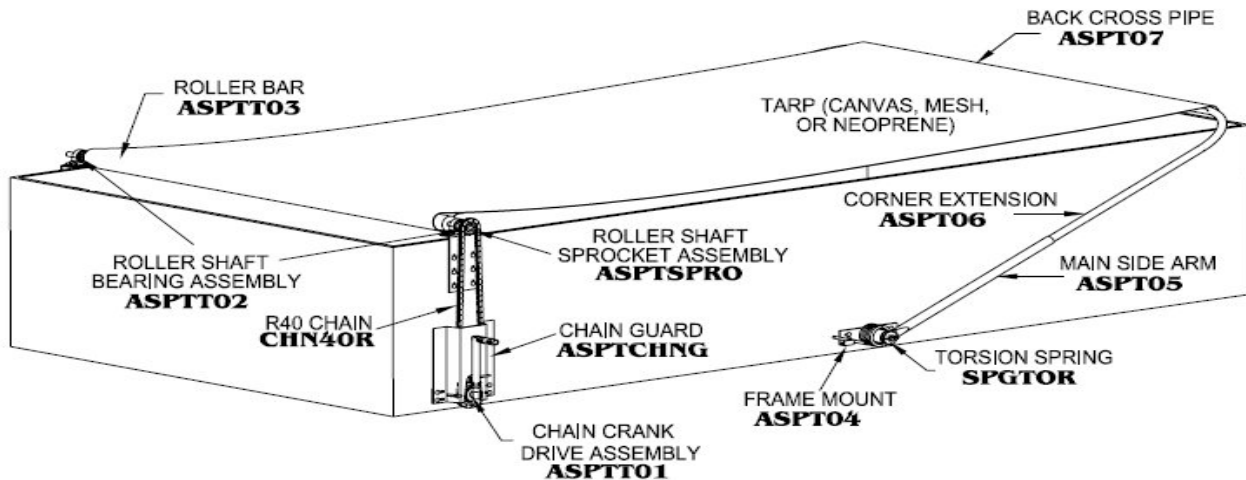
Key way	1	
Sprocket Assembly	1	

**Parts**

Roller Shaft Bearing Assembly	2	
21" Tarp Straps	2	
Frame Mounts	2	
Main Side Arm	2	
Corner Extension	2	
Back Cross Pipe	1	
Roller Bar (Roll Pipe)	1	
Torsion Spring Left	1	
Torsion Spring Right	1	
Tarp	1	
Chain Drive Winch	1	
Chain	1	
Chain Guard (New Style)	1	

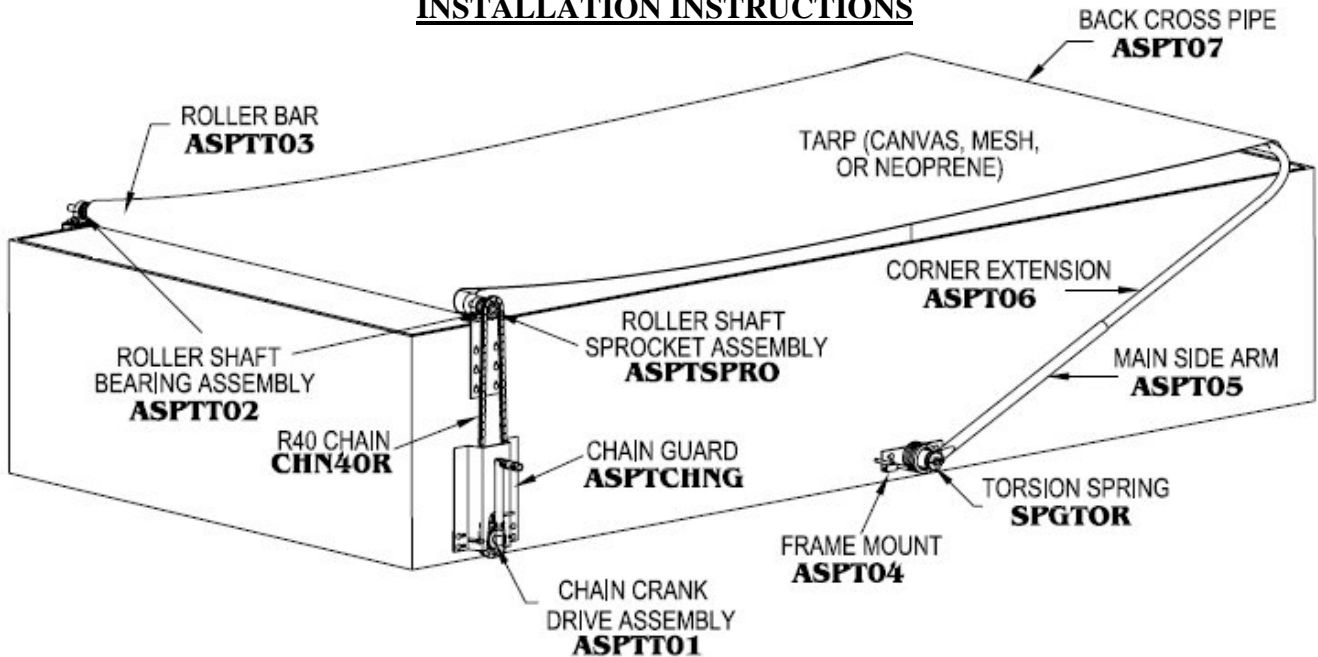


Signature :



# Lower Crank Tarp Kit Installation Manual

## INSTALLATION INSTRUCTIONS



### Mounting the Roll Pipe

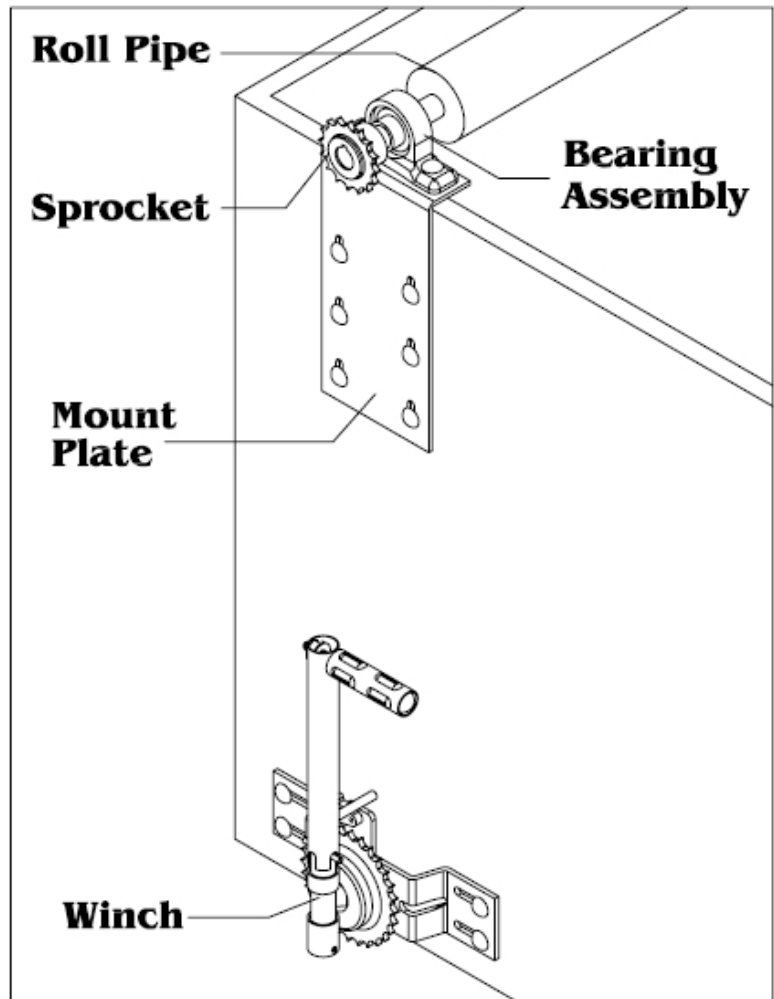
Slide the roll pipe through one of the pockets in the cover. Insert the 1" solid shafts at each end of the roll pipe into the 1" bearings. Make sure the milled shaft is on the driver side of truck. Install the Roller Shaft Bearing Assemblies at the front of the box. Drill 1/4" pilot holes before installing the 5/16" self-threading bolts. (4 per plate)

### Sprocket and Keyway

Slide sprocket onto milled shaft on the end of the roll pipe – insert keyway and tighten set screw.

### Chain Drive Winch

Place winch directly below the sprocket on the roll pipe. Drill 4 – 1/4" pilot holes then install winch using 4 – 5/16" self-thread bolts. Install chain later.

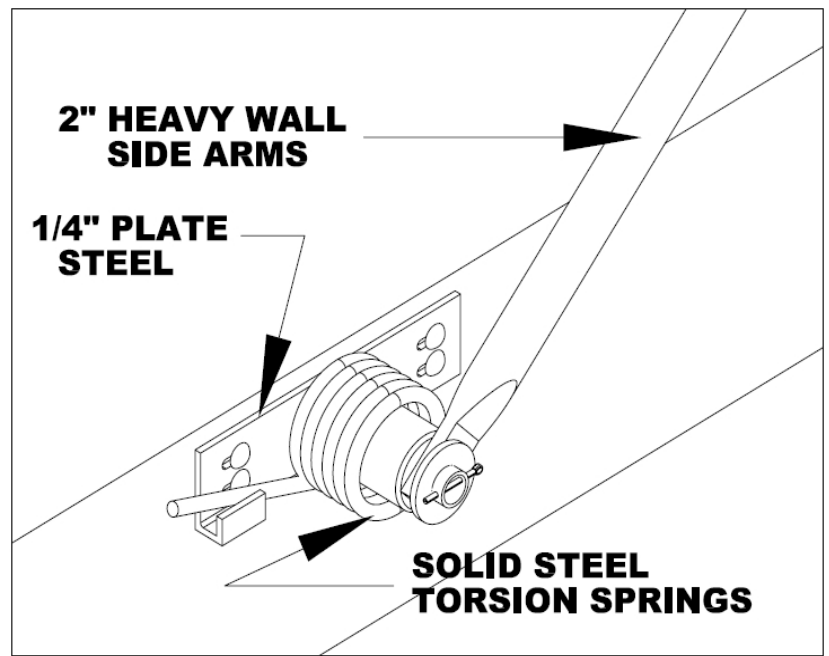


## Install Frame Mounts

Install on side of box – directly in center of the box, same distance from front and back of box. Drill 4 – 1/4" pilot holes and fasten using 4 - 5/16" self-thread bolts.

## Torsion Spring & Side Arm

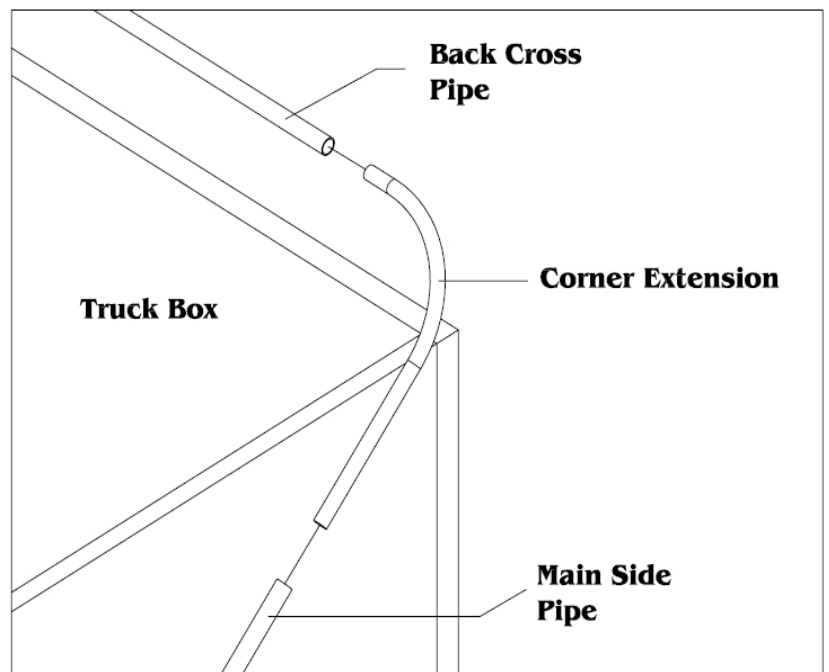
This a left and a right side torsion Spring, install as shown on diagram. Install side arm onto frame mount, making sure the torsion spring end is inserted into the tube welded onto the side arm. Slide the 1/8" ID washer onto frame mount, then insert cotter pin into hole and spread ends of cotter pin to make sure assembly stays on the frame mount.



## Corner Extensions & Back Pipe

Slide corner extensions into side and bolt temporarily using 3/8" x 2.5" bolt.

Cut the back cross pipe to suit the width of the box leaving enough for it to slip over top of the corner extensions so that main side arms clear the box evenly on both sides. Slip the back cross pipe through the loop in the back of the tarp and then slide the cross pipe onto the other corner extension. Install the 3/8"x 2.5" bolts and lock nuts. You may wish to cut off excess bolt.



## Secure Tarp

Install the u-clamps onto cover. Hold a u-clamp in position on the front roll pipe, drill a 3/32" pilot hole through the tarp and into the roll pipe. Still holding the u-clamp in place, install a 3/16" u-clamp screw through the predrilled hole. The supplied tarp straps are to be installed onto the 1/2 links on the back cross pipe to eliminate the back cross pipe from bouncing when unrolled.

### Install Chain

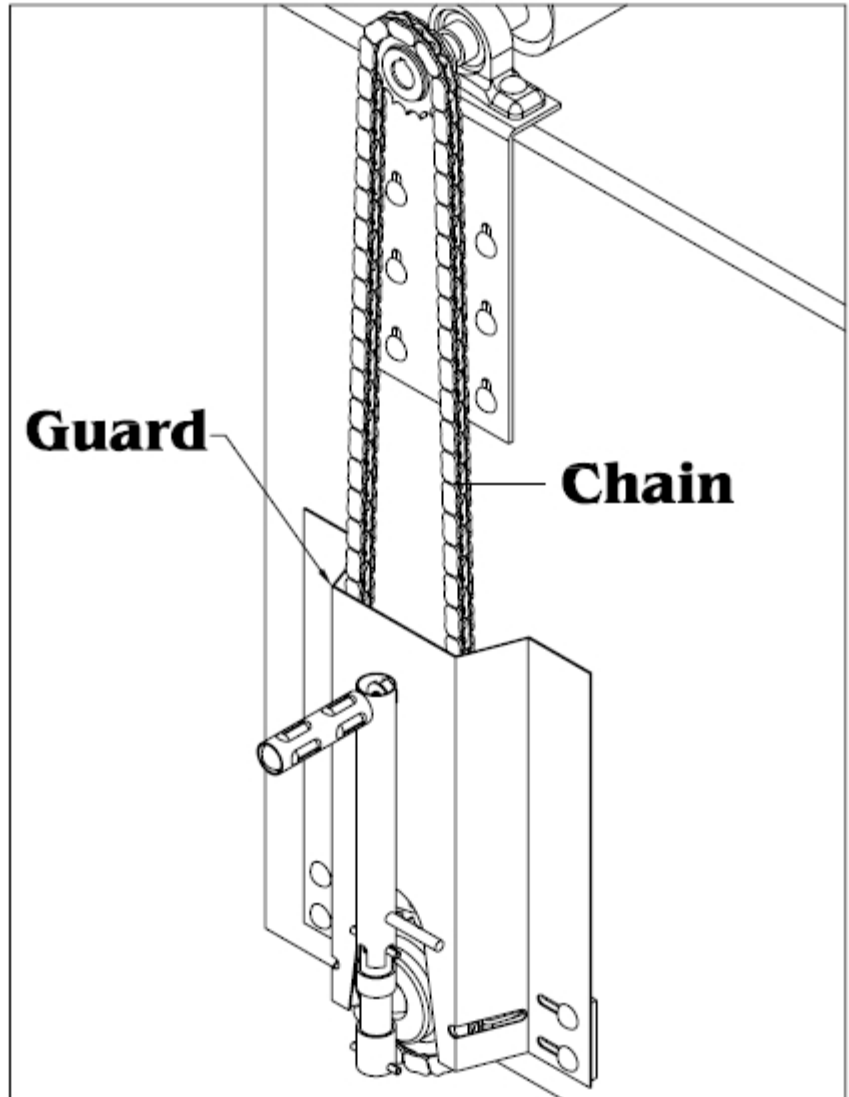
Install chain onto drive winch sprocket and onto top roll pipe sprocket as shown on the right.

### Install Chain Guard

Remove bolts that hold on drive winch. Insert chain guard behind handle on drive winch and over top of drive sprocket and chain. Install bolts back into drive winch assembly securing the chain guard to the winch frame and onto the truck box.

**NOTE:** Drive winch handle is spring loaded and can be rotated in order to lock handle inward.

**CAUTION:** Keep hands and clothing away from chain and sprockets when operating this machine.



***Your Lower Crank Tarp Kit  
is Now Ready to Use!***

 ***Inland Plastics Ltd.***

**Head Office**  
PO Box 2199  
Drumheller, AB  
T0J 0Y0  
1-800-661-1062 CDN  
PH: (403) 823-6252  
FX: (403) 823-7310  
1-800-661-9487 USA

**Branch**  
1645 Enterprise Road.  
Mississauga, ON  
L4W 4L4  
1-800-387-7765  
PH: (905) 670-3000  
FX (905) 670-3003

**Branch**  
842-56 St. E.  
Saskatoon, SK  
S7K 5Y6  
PH (306) 931-1122  
FX (306) 934-7078

**Branch**  
Unit 206, 9775-188 St.  
Surrey, BC  
V4N 3N2  
1-800-997-6299  
PH (604) 882-1469  
FX (604) 882-1460

**Branch**  
1590 Grinell Road.  
Kankakee, IL 60901  
1-800-387-7765  
PH (815)933-3500  
FX (815)933-4500

**Branch**  
6100-58<sup>th</sup> Ave., Unit D  
Commerce City, CO  
80022  
1-877-853-8886  
PH (303) 853-8886  
FX (303) 853-4744

[www.inlandplastics.com](http://www.inlandplastics.com)